



# MONTHLY MEMBERSHIP PROGRESS REPORT

District 9 NE

Results as of: 03/31/2018

GMT: MICHAEL MOLEND

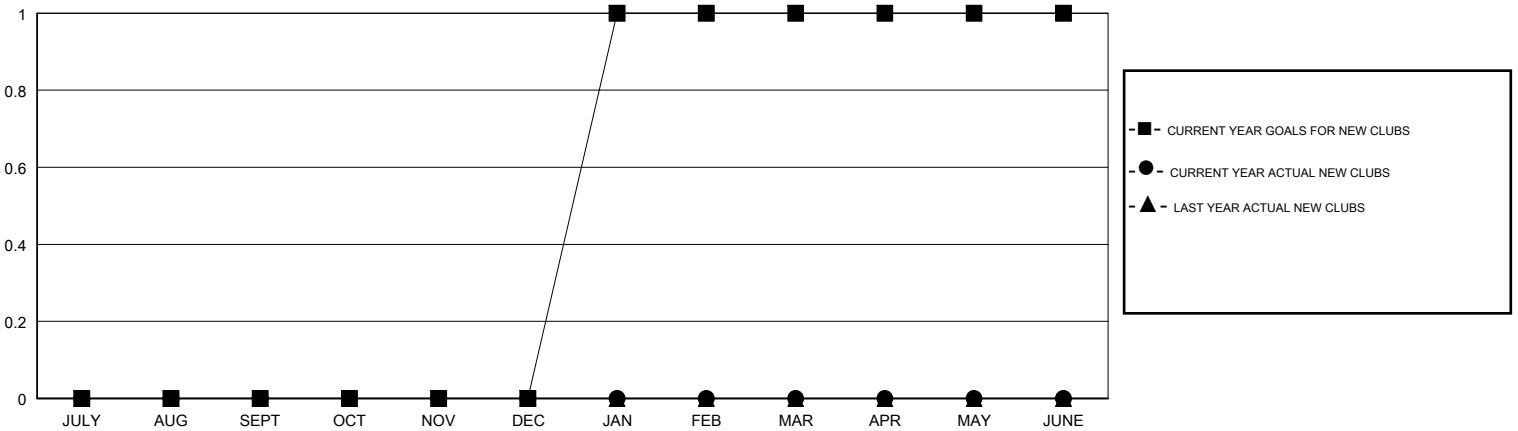
LOCATION IOWA

GMT CA

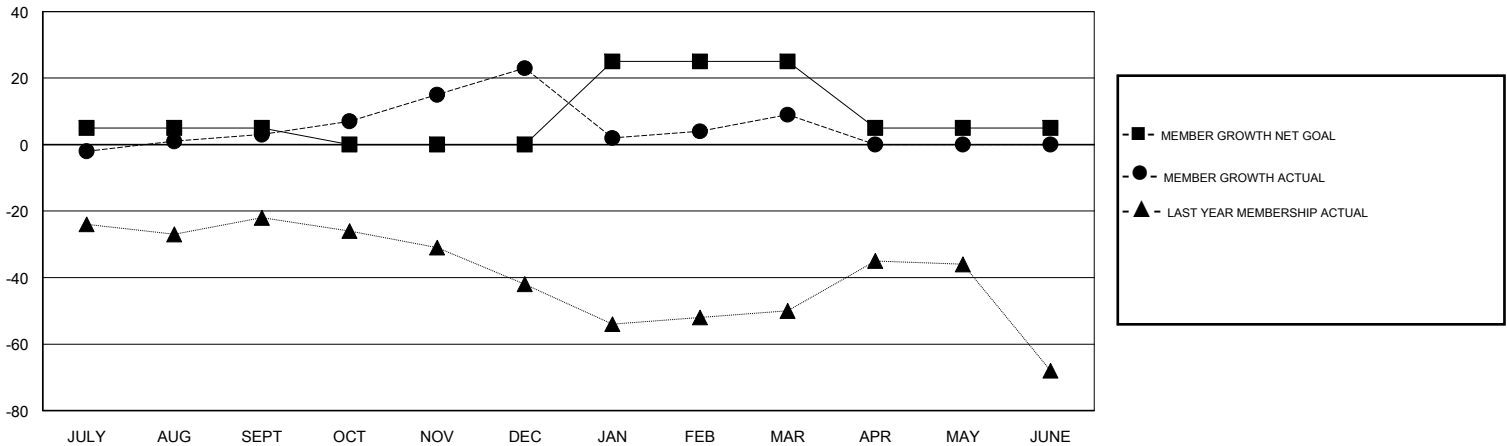
Clubs			
RESULTS FOR 2017-2018			
QUARTER	NEW CLUB GOAL	NEW CLUBS	DROPPED CLUBS
JULY/AUG/SEPT	0	0	0
OCT/NOV/DEC	0	0	0
JAN/FEB/MAR	1	0	1
APR/MAY/JUNE	0	0	0

Members			
RESULTS FOR 2017-2018			
QUARTER	MEMBER GROWTH NET GOAL	MEMBER GROWTH ACTUAL	DROPPED MEMBERS ACTUAL (including transfers)
JULY/AUG/SEPT	5	42	32
OCT/NOV/DEC	-5	42	19
JAN/FEB/MAR	25	30	43
APR/MAY/JUNE	-20	0	0

GOALS AND ACTUAL NEW CLUBS CUMULATIVE



GOALS AND ACTUAL MEMBERS CUMULATIVE



DROPPED CLUBS: 1
------------------

29 CLUBS OF 46 ADDED 1 OR MORE NEW MEMBERS

GENDER DISTRIBUTION	
MALE	1,077 (79.48%)
FEMALE	278 (20.52%)
Women Percentage Fiscal Year Goal: 22%	

DROPPED MEMBERS	
DECEASED	11
CLUB CANCELLED	15
OTHER	68
<b>TOTAL</b>	<b>94</b>

[CLICK HERE FOR CUMULATIVE MEMBERSHIP DATA](#)

TOTAL FAMILY UNIT MEMBERS	157
FAMILY MEMBERS PAYING HALF DUES	80